



MOTORSPORTS  
GATEWAY<sup>TM</sup>  
**GARAGE CONDOS**

**2023**

# DRIVEN BY PASSION

Motorsports Gateway Howell has been a passion project in the making for the past 8 years. Together, we realized how much we enjoyed connecting with other car enthusiasts. It's an amazing feeling to be able to cultivate a community centered around our greatest passion. We are proud to unveil this dynamic automotive district in the new motorsport capital of Metro Detroit - Howell, Michigan.

Co-founders, Jordan & Mark Dick

Handwritten signatures of Jordan and Mark Dick in black ink.



EXPERIENCE AUTOMOTIVE  
**LUXURY**

**WHERE AUTOMOTIVE HISTORY BEGAN**

Michigan is the historic heart of the automotive industry. It's only fitting to unveil this one-of-a-kind automotive district in Metro Detroit. Each luxury garage condo on this property features a track-fronting view and second-level balcony. The numerous amenities at this district make it a thrilling destination experience for our Drivers Club owners and their guests.



Motorsports Gateway Howell is Michigan's leading motorsports destination for automotive enthusiasts. This motorsport complex spans an impressive 273-acres. Centrally located, just 1 mile from downtown Howell and 6 miles from Livingston County Airport, this district offers track-side views, traditional country club amenities, and access to an exclusive, internationally developed driving circuit. Motorsports Gateway Howell is tailored specifically for automotive enthusiasts who want to experience automotive luxury where automotive history began.





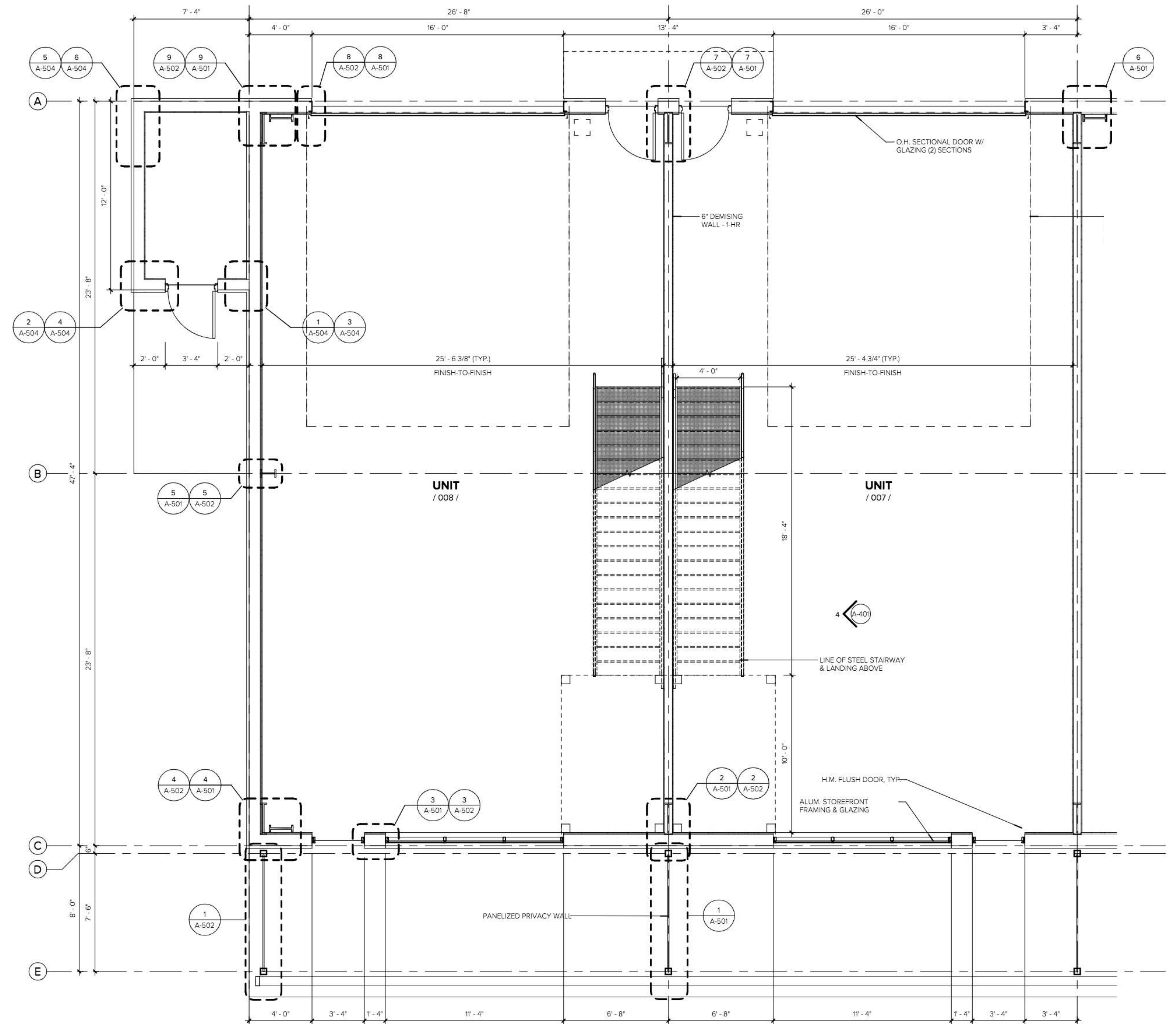
# EXCLUSIVE ACCESS

Garage condo owners at Motorsports Gateway Howell have access to a world of exclusive events and experiences. Whether you're attending one of our private gatherings or joining us at a major motorsports event, you'll be surrounded by an exclusive community of like-minded automotive enthusiasts. It's the perfect opportunity to network, make new friends, and indulge your passion for all things automotive.

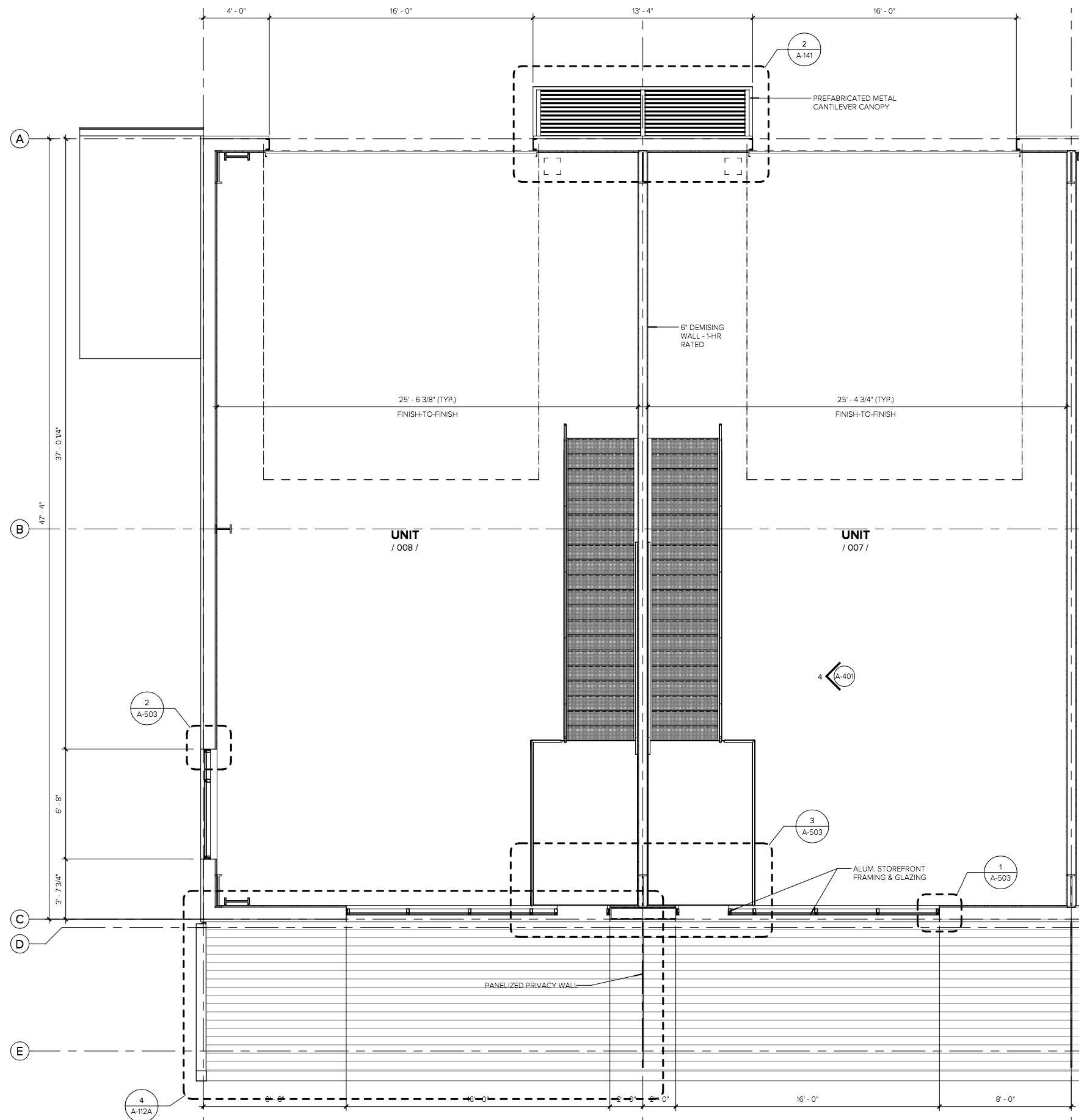
# GROUND LEVEL

Our garage condo units come prepped and ready for interior customization. Every garage condo is fitted with standard amenities, including:

- | 6" concrete slab floor
- | Noise-insulated walls
- | Electric 16' x 18' garage door
- | Drive side and track side windows
- | Energy efficient HVAC unit
- | Fire suppression system
- | Stubbed water line & sanitary drain
- | Staircase and second level landing
- | Energy-efficient lighting fixtures
- | 100 amp service panel & receptacles
- | Track-fronting balcony
- | Track-fronting concrete patio



# SECOND LEVEL



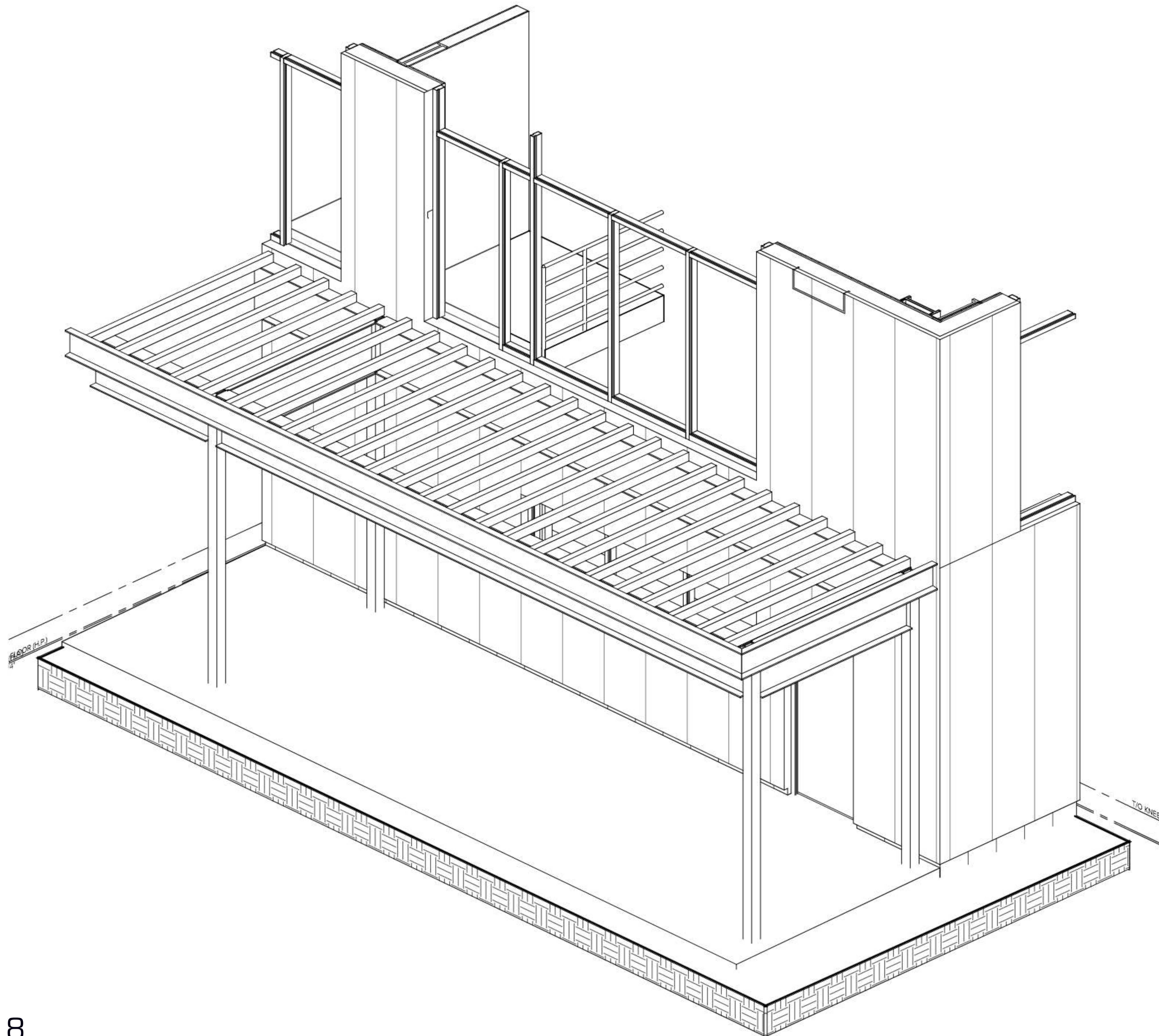
We offer 2 different options for our luxury garage condos; interior units and exterior units. Both units total approximately 1,200 sqft on the ground level.

You can increase the interior area of your garage condo to approximately 2,400 sqft by installing a second floor mezzanine in your unit. Multiple units can also be combined to create one large unit.

Each unit can be uniquely customized with facilities for cooking, entertaining, and overnight stays through one of our preferred construction partners.



# EXTERIOR SPACES



Each of our luxury garage condos feature a stunning track-fronting view.

To ensure you get the most out of your track-front view, all units include a +220 sqft second-level balcony and 200 sqft ground-level patio that expand the full width of your unit.

Enjoy your view in rain or shine from your covered outdoor track side space.



## **DRIVE SIDE**

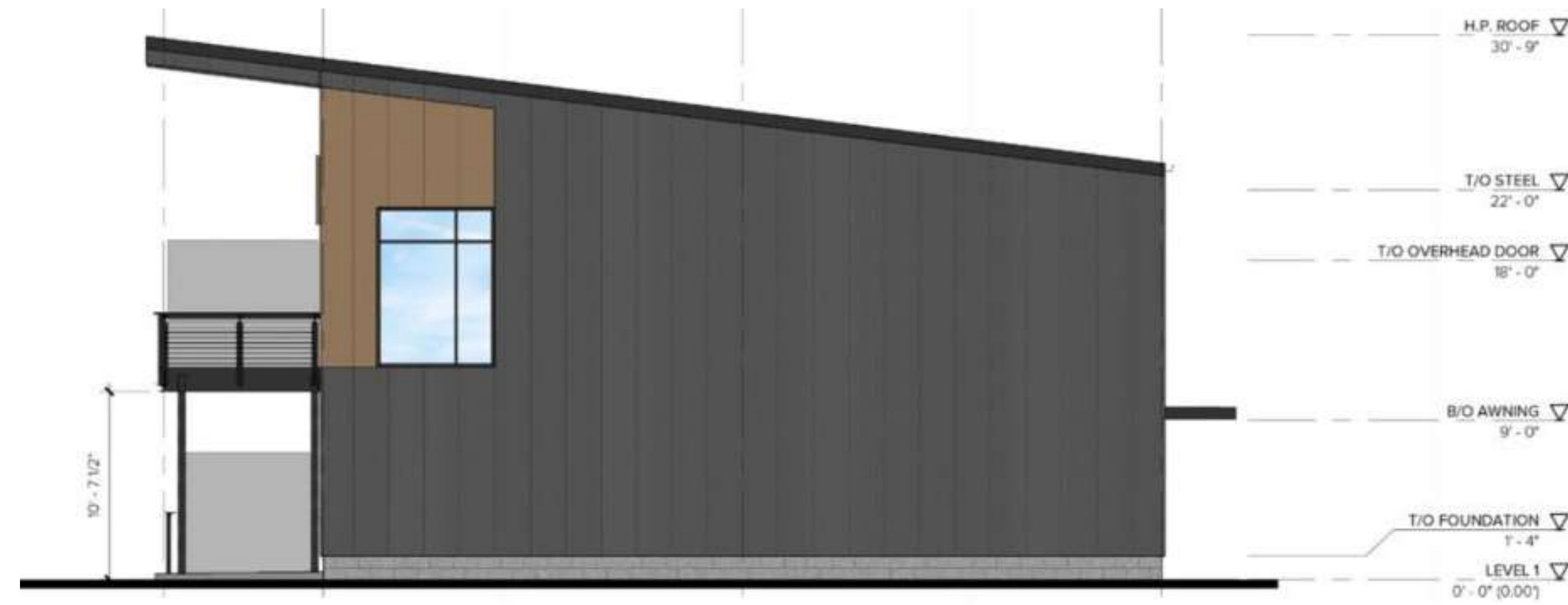
Our luxury garage condos never have more than two neighboring units. This provides natural lighting from the front and back of each unit. This feature also reduces noise and increases privacy for our owners.



## **TRACK SIDE**

Every garage condo is track-fronting with a ground level patio and balcony that extends the full width of each unit. From your second level balcony or ground level patio, you won't miss any of the action.

# ELEVATIONS



# SHORTEN THE COMMUTE OWN A GARAGE





# INTERIOR UNIT

CALL FOR PRICING | 1,231 ground level sqft\*

+ 226 sqft exterior balcony

+ 200 sqft exterior patio

\*Install a second floor mezzanine for a potential total interior area of approximately 2,400 sqft

IMAGE COURTESY OF OUR PARTNER  
ASHMARK CONSTRUCTION

# BUILT WITH **YOU IN MIND**

---

---

## **TRACK-FRONTING**

Every garage condo is track-fronting with a full width second level balcony and a ground level patio to ensure you always have an unbeatable view of the action.

## **NATURAL LIGHTING**

There's no replacement for natural light. That's why we've engineered each garage condo with natural lighting through the front and back of each unit.

## **SECURED PRIVACY**

Our gated garage condo community is secured to owners and their guests. Each unit has no more than two neighbors for added privacy and reduced noise.

## **EQUIPPED SPACES**

Each garage condo is equipped with energy-efficient utilities at no additional cost so you can focus on the design and details of your custom space.

## **EXCLUSIVE ACCESS**

When you become an owner at Motorsports Gateway Howell, you'll also gain access to exclusive amenities like our track-side event spaces.

## **MODERN DESIGN**

We're working with experienced industry leaders to create sleek spaces that blend with the curves of the track, to provide a seamless track-side experience.



IMAGE COURTESY OF OUR PARTNER  
ASHMARK CONSTRUCTION

# END UNIT

**CALL FOR PRICING | 1,262 ground level sqft\***

+ 228 sqft exterior balcony

+ 200 sqft exterior patio

\*Install a second floor mezzanine for a potential total interior area of approximately 2,400 sqft



# ASHMARK CONSTRUCTION

We've partnered with Ashmark Construction to provide our owners with industry experts to help customize the interior of their garage condo.

Ashmark Construction is well-versed in custom garage condos in Metro Detroit. They specialize in sophisticated motorsport garages, with an expertise in luxury design.

For more information about Ashmark's services, you can visit their website or contact them directly.

✉ [martin@ashmark.com](mailto:martin@ashmark.com)

🌐 [ashmark.com](http://ashmark.com)



# BREAK AWAY

*Set yourself apart with an exciting space to entertain and an unbeatable view of the action.*





Thank you for your interest in becoming an owner at Motorsports Gateway Howell.  
For more information:

✉ [owners@motorsportsgateway.com](mailto:owners@motorsportsgateway.com)

☎ (517) 798-6608

🌐 [motorsportsgateway.com](http://motorsportsgateway.com)

Motorsports Gateway Howell site plan, track, phasing, building footprints, elevations, unit specifications, locations, and unit pricing are subject to change without notice. Motorsports Gateway Howell Drivers Club Membership fees, benefits, and discounts are subject to the rules and regulations of the Membership Agreement, Membership Plan, and Rules & Regulations, all of which are subject to change.